

CFA DESIGNS RENOVATION SALE

Discounts up to 70% on all showroom displays
and warehouse models

Please visit our showroom at
11 West 25th Street, Floor 3, New York, NY 10010

Call to schedule: 516.380.8609 or 212.219.3677
or email: cinzia@cfadesigns.net
www.cfadesigns.net

Exclusive selection of kitchens, wardrobes, bathrooms, doors, furniture and lighting,
all manufactured in Italy. Entire showroom inventory available for purchase.



11 West 25th Street, Floor 3, NY, NY 10010 • 212 219 3677 • www.cfadesigns.net • info@cfadesigns.net

CFA BESPOKE CUSTOM VANITY WITH MIRROR MEDICINE CABINETS
SURROUNDED BY FULL HEIGHT LED LIGHT PORTAL. 100% MADE in ITALY



CFA DESIGNS BESPOKE MASTER VANITY in GLOSSY LACQUER WITH MATTE LACQUER INTERIORS. POLISHED NICKEL FRAME and LEGS, WHITE GLASS SHELF, MIRROR MEDICINE CABINETS WITH LOW IRON GLASS INTERIOR SHELVES, SURROUNDED by LED LIGHT PORTAL W/ FROSTED GLASS FASCIA & FRAME in FINISH TO MATCH POLISHED NICKEL, SILESTONE COUNTERTOP. APPROXIMATE DIMENSIONS 8' x 4'. ALL INCLUDED in SALE PRICE. FULLY MANUFACTURED IN ITALY.

CALL to INQUIRE ABOUT SALE PRICE: 516.380.8609 or 212.219.3677



VANITY SPECIFICATIONS:

PRODUCT:	CFA DESIGNS BESPOKE
MODEL:	CUSTOM
DOOR:	GLOSSY POLYESTER LACQUER, 99% BRILLIANCE, TO MATCH BM CHINA WHITE
CABINET INT.:	HYDRO-REPELLENT POPLAR PARTICLE BOARD MATTE LACQUERED TO MATCH BM1473 GREY HUSKIE
DRAW. STRUCT:	SOLID BEECH WOOD, MATTE LACQUERED TO MATCH BM1473 GREY HUSKIE
GLIDES:	BLUM MOVENTO BLUMOTION
CHANNEL:	POLISHED NICKEL FINISH ALUM.
LIGHTING:	FLUSH LED LIGHTING
LEGS:	POLISHED NICKEL FINISH ALUMINUM
SHELF:	WHITE GLASS W/ POLISHED NICKEL FINISH ALUMINUM FRAME
COUNTERTOP:	SILESTONE ETERNAL STATUARIO FINISH

MEDICINE CABINET SPECIFICATIONS:

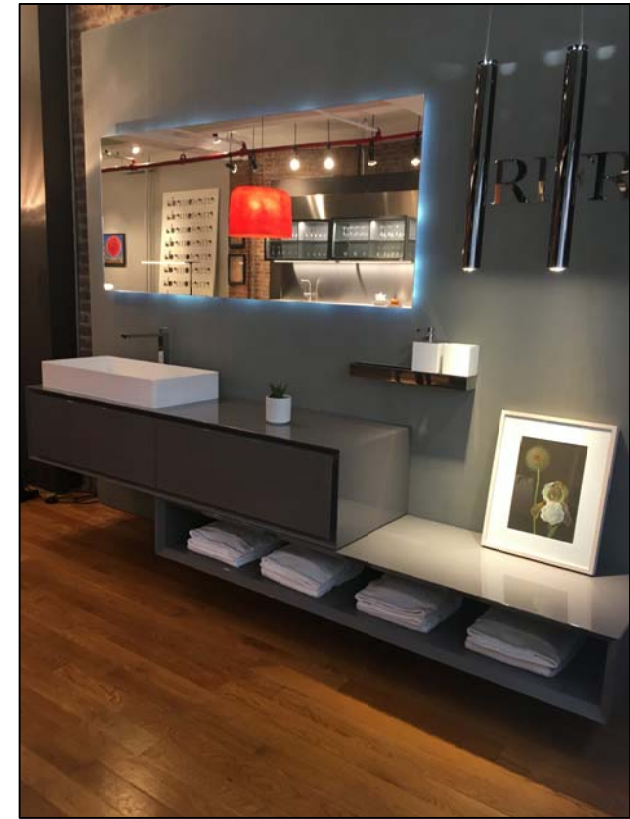
DOOR:	HYDRO-REPELLENT POPLAR PARTICLE BOARD COVERED W/ MDF LACQUERED RAL 9010 W/ POLISHED NICKEL FRAME
CABINET INT.:	HYDRO-REPELLENT POPLAR PARTICLE BOARD COVERED W/ MDF LACQUERED RAL 9010
SHELVES:	LOW IRON GLASS
INT. LIGHTS:	FLUSH STRIP LED
HINGES:	BLUM CLIP TOP BLUMOTION
HANDLE:	PULL INTEGRATED INTO FRAME
LIGHT PORTAL:	LED FIXTURE W/ FROSTED GLASS FASCIA & FRAME IN FINISH TO MATCH POLISHED NICKEL

SPECIFIED FIXTURES:

SINK:	DIRAVIT VERO UNDERMOUNT SINK 033304800 - 19-1/8"
FAUCET:	SYMMONS CDSLW1272-12-PNL

BEAUTIFUL BATHROOM VANITY BY RIFRA, MADE in ITALY.

MODEL "K.ONE". HIGHT-GLOOSS LACQUER WITH CORIAN SINK. ALL PLUMBING AND ACCESSORIES INCLUDED



LARGE WALL HUNG STORAGE COMPONENTS ARE FULLY LACQUERED INSIDE AND OUTSIDE.
LARGE MIRROR FEATURES LED LIGHTS AT BACK PERIMETER.
CUSTOM SINK by RIFRA, POLISHED CHROME FAUCET BY GESSI, CORIAN ACCESSORIES. ALL INCLUDED IN SALE PRICE.

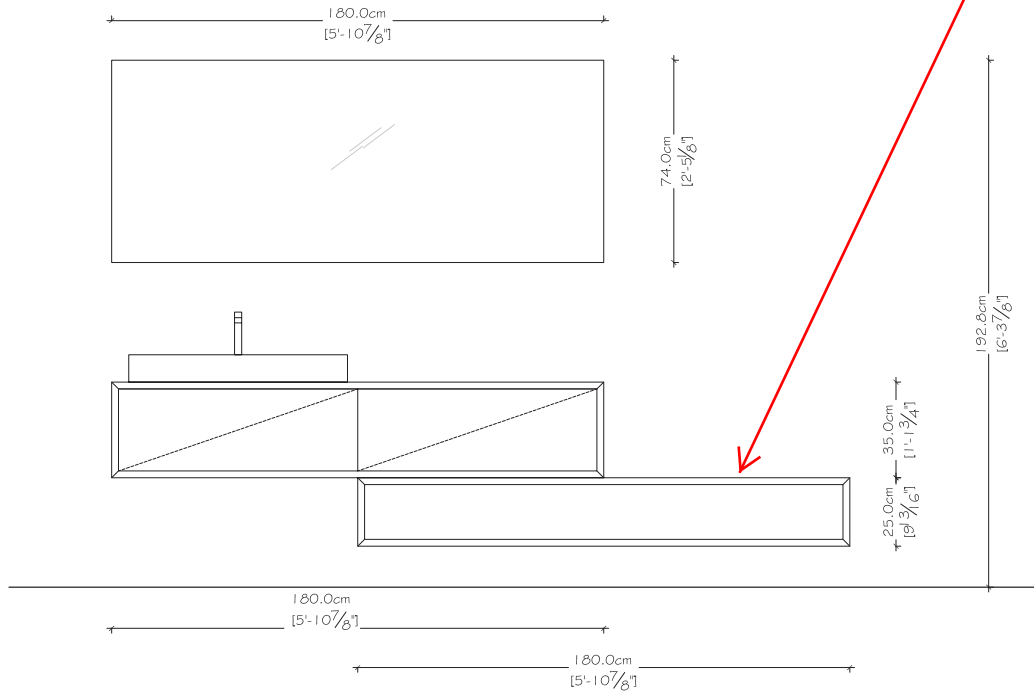
CALL TO INQUIRE ABOUT SALE PRICE: 516.380.8609 or 212.219.3677



11 West 25th Street, 3rd Floor, New York, NY 10010
 | 212.219.3617 • | 212.219.3652 • w | www.cfadesigns.net

PROJECT:
 CFA Designs Showroom
 11 W 25th St, 3rd Floor
 New York, NY 10010

open shelf can be positioned differently



ACCEPTED AND APPROVED BY CLIENT. CLIENTS RESPONSIBLE FOR HOLDING TO ALL DIMENSIONS DRAWINGS AND CONTRACTOR TO REVIEW. NO MANUFACTURING MAY COMMENCE UNTIL RETURNED DRAWINGS AND APPROVAL ARE RECEIVED.

APPROVED BY: _____
 DATE: _____

NO.	DATE	DESCRIPTION	DESIGN BY	REVISION BY
01				
02	2017.06.07	DESIGN DEVELOPMENT	LV	
03	2017.06.10	DESIGN DEVELOPMENT	LV	

SHEET TITLE:
 CURRENT RIFRA WALL

PROJECT NO: CFA SHOWROOM 2017

SCALE: NTS

SHEET NO:

CFA BESPOKE CUSTOM CLOSET
100% MADE in ITALY



CFA DESIGNS BESPOKE CLOSET, LACQUERED THROUGHOUT, BRONZE COLOR FRAME DETAIL AND GOLD LEAF & CORK WALLPAPER INLAY AT DRAWERS AND TRIMS, SOLID WOOD LACQUERED DRAWERS, INTEGRATED VERTICAL LED LIGHTS THROUGHOUT, LED LIT BASE. HEIGHT - 2966mm (9' 8-3/4"). FULLY MANUFACTURED IN ITALY.

CALL TO INQUIRE ABOUT SALE PRICE: 516.380.8609 or 212.219.3677